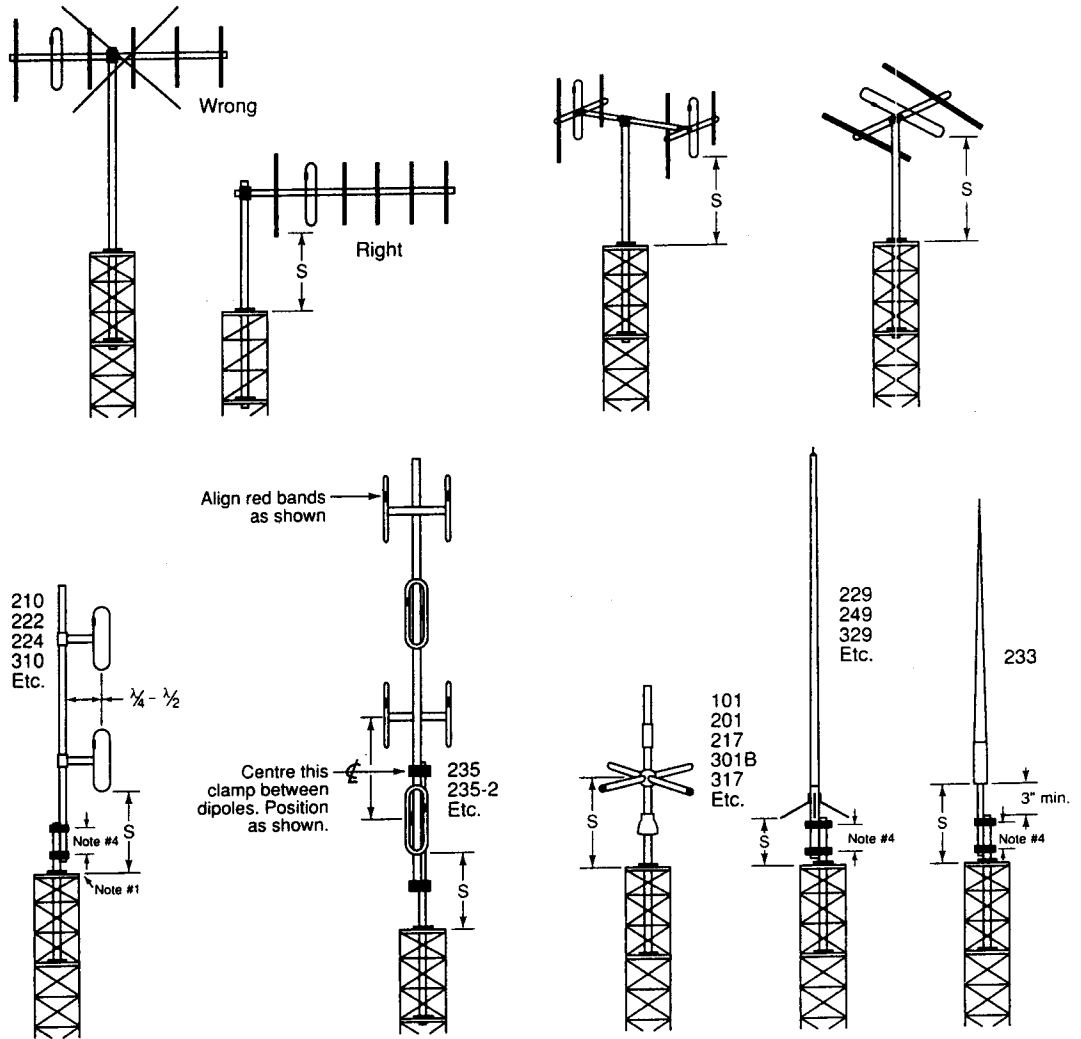


TOWER MOUNTING GUIDELINES

Top Mounted Antennas

Notes

1. Install exposed dipole antennas to spacing "S" with antenna support pipe clamped to antenna mast on side away from lowest dipole.
2. If obstruction lighting is installed on tower dimension "S" will apply from the lighting fixture to the lowest dipole, ground plane of collinear antenna skirt.
3. If tower face width exceeds 3 ft., "S" dimension must be increased.
4. Set clamp spacing as shown on individual customer assembly instructions.



Side Mounted Antennas

Wavelength Spacings

MHz	$\lambda/4$	$\lambda/2$	$3/4 \lambda$	1λ
30	98.5"	197"	295"	394"
50	59"	118"	177"	236"
140	21"	42"	63"	84"
160	18.5"	37"	55.5"	74"
410	7.25"	14.5"	21.75"	29"
460	6.5"	13"	19.5"	26"

Value of "S"

From 30 to 50 MHz	60 inches
From 140 to 160 MHz	48 inches
From 410 to 460 MHz	36 inches

